

April 2008



## Genuine accessories for the SLK-Class

Mercedes-Benz

Please note: changes may have been made to the products since this brochure went to press (19.12.2007). The manufacturer reserves the right to make changes to the design, form, colour and specification during the delivery period, provided these changes, while taking into account the interests of the vendor, can be deemed reasonable with respect to the purchaser. Where the vendor or the manufacturer uses symbols or numbers to describe an order or the subject of an order, no rights may be derived solely from these. The illustrations may show accessories and items of optional equipment which are not part of standard specification. Colours may differ slightly from those shown in the brochure, owing to the limitations of the printing process. This brochure has been compiled by Daimler AG of Germany and is distributed internationally. It provides a general indication of the range of models, features, optional extras and/or colours available in various countries. Some of the models, features, optional extras and/or colours may not be available in your country or may only be available in a different specification. Additionally some models, features, optional extras and/or colours may only be available in combination with others. For current and more specific information in relation to the range of models, features, optional extras and/or colours available in your country, and their pricing, you should contact your nearest authorised Mercedes-Benz Passenger Car Dealer.

Mercedes-Benz Accessories GmbH, Stuttgart · A Daimler AG company  
3230 · 1282 · 02-01/0408 · Printed in the Federal Republic of Germany





## CONTENTS

### EXTERIOR

*Light-alloy wheels | Wheel accessories | Styling accessories* ..... **04**

### TELEMATICS

*iPod integration | Navigation | Telephony* ..... **16**

### INTERIOR

*Interior appointments | Child safety* ..... **22**

### CARGO & CARE

*Carrier systems | Boot accessories* ..... **30**

### COLLECTION

*Mercedes-Benz Lifestyle Collection* ..... **40**

### AMG

*AMG light-alloy wheels | AMG bodystyling* ..... **44**



*Light-alloy wheels  
Wheel accessories  
Styling accessories*

# EXTERIOR



## Pièces de résistance

People who choose an SLK do so because they appreciate its clean lines and honed design. At the same time they also appreciate the fact that there are plenty of ways to adapt and personalise this stylish car.

Make your SLK as individual as you are. Four pages of **incenio** designer wheels alone give you some idea of the range of possibilities on offer.

**incenio** designer wheels

**Korsunia**  
5-triple-spoke wheel  
**incenio** designer wheel  
Finish: sterling silver  
Wheel: 7.5 J x 18 ET 36  
Tyre: 225/40 R18  
Option for rear axle:  
Wheel: 8.5 J x 18 ET 30  
Tyre: 245/35 R18

**Alresha**  
Multi-spoke exclusive forged wheel\*  
**incenio** designer wheel  
Finish: two-tone, high-shine chromed  
Wheel: 7.5 J x 18 ET 37 | Tyre: 225/40 R18  
Option for rear axle:  
Wheel: 8.5 J x 18 ET 30 | Tyre: 245/35 R18  
\*Not compatible with snow chains



**EXTERIOR**



**Elarneb | 6-spoke wheel, multi-piece**

**incenio** designer wheel

Finish: sterling silver

Wheel: 7.5 J x 17 ET 36

Tyre: 225/45 R17

Option for rear axle:\*

Wheel: 8.5 J x 17 ET 30

Tyre: 245/40 R17

*\*Not compatible with snow chains*

On all light-alloy wheels, use wheel bolt B6 647 0133 and the corresponding rim lock B6 647 0143 (from spring 2008: B6 647 0155).

Light-alloy wheels are supplied without tyres, wheel bolts or hub caps.



**Sadachiba**  
5-spoke wheel, multi-piece

**incenio** designer wheel

Finish: titanium silver, high-sheen

Wheel: 7.5 J x 18 ET 37

Tyre: 225/40 R18

Option for rear axle:\*

Wheel: 8.5 J x 18 ET 30

Tyre: 245/35 R18

*\*Not compatible with snow chains*

**Algedi | 10-spoke wheel**

**incenio** designer wheel

Finish: sterling silver

Wheel: 7.5 J x 17 ET 36

Tyre: 225/45 R17

Option for rear axle:\*

Wheel: 8.5 J x 17 ET 30

Tyre: 245/40 R17

*Titanium silver option also available*

*Not for SLK 55 AMG*

*\*Not compatible with snow chains*

**Acubens | 6-spoke wheel**

**incenio** designer wheel

Finish: sterling silver

Wheel: 7 J x 16 ET 34

Tyre: 205/55 R16

Option for rear axle:\*

Wheel: 8 J x 16 ET 30

Tyre: 225/50 R16

*Not for SLK 350*

*\*Not compatible with snow chains*



**incenio** designer wheels

**EXTERIOR**



**6-twin-spoke wheel**  
 Finish: titanium silver  
 Wheel: 7.5 J x 18 ET 36  
 Tyre: 225/40 R18  
 Option for rear axle:  
 Wheel: 8.5 J x 18 ET 30  
 Tyre: 245/35 R18

*Also available as 17" wheel  
 Not for SLK 55 AMG  
 Not compatible with snow chains*



**5-spoke wheel**  
 Finish: titanium silver,  
 high-sheen  
 Wheel: 7.5 J x 17 ET 36  
 Tyre: 225/45 R17  
 Option for rear axle:\*  
 Wheel: 8.5 J x 17 ET 30  
 Tyre: 245/40 R17

*Not for SLK 55 AMG  
 \*Not compatible with snow chains*



**5-twin-spoke wheel**  
 Finish: titanium silver  
 Wheel: 7.5 J x 17 ET 36  
 Tyre: 225/40 R17  
 Option for rear axle:\*  
 Wheel: 8.5 J x 17 ET 30  
 Tyre: 245/35 R17

*Not for SLK 55 AMG  
 \*Not compatible with snow chains*



**Algedi | 10-spoke wheel**  
 Finish: chrome shadow  
 Wheel: 7.5 J x 17 ET 36 | Tyre: 225/45 R17  
 Option for rear axle:  
 Wheel: 8.5 J x 17 ET 30 | Tyre: 245/40 R17

*See also Algedi | incenio designer wheel, page 08  
 Not for SLK 55 AMG*



**Hub caps**  
 Protect the hub from dirt.  
 Available in the following versions:  
 1 | Classic Roadster design in blue  
 2 | Classic Roadster design in black  
 3 | Sterling silver with chrome star  
 4 | Titanium silver with chrome star

*Mercedes-Benz  
 light-alloy wheels  
 Hub caps*

**EXTERIOR**

#### Mud flaps

Protect the underbody and the sides of the car from loose chippings and dirt. For front and rear axles



#### 5-twin-spoke wheel

Finish: titanium silver  
Wheel: 7.5 J x 17 ET 36  
Tyre: 225/45 R17  
Option for rear axle:  
Wheel: 8.5 J x 17 ET 30  
Tyre: 245/40 R17



#### 5-spoke wheel

Finish: titanium silver  
Wheel: 7.5 J x 17 ET 36 | Tyre: 225/45 R17  
Option for rear axle:\*  
Wheel: 8.5 J x 17 ET 30 | Tyre: 245/40 R17

*Not for SLK 55 AMG  
\*Not compatible with snow chains*

#### 5-spoke wheel

Finish: titanium silver  
Wheel: 7 J x 16 ET 34 | Tyre: 205/55 R16  
Option for rear axle:\*  
Wheel: 8 J x 16 ET 30 | Tyre: 225/50 R16

*Not for SLK 55 AMG  
\*Not compatible with snow chains*

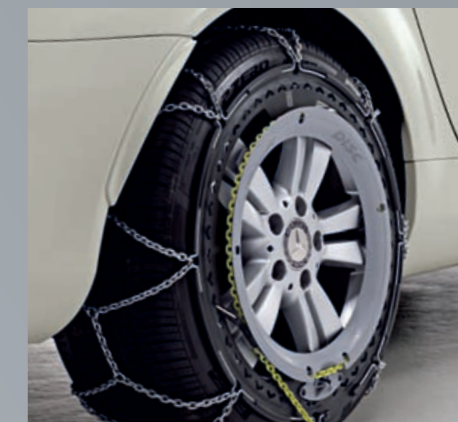
#### 7-spoke light forged wheel

Finish: sterling silver  
Wheel: 7 J x 16 ET 34 | Tyre: 205/55 R16

*Not for SLK 350 or SLK 55 AMG. Please note use of special bolts and rim locks*

#### Flaring for wide-base tyres

In accordance with ECE standard for standard-specification tyres. Discreet flaring strip. To be painted in body colour by dealer



#### Valve caps

Wheel bolts | not pictured |

#### Rim locks

Set consisting of coded key and one lock per wheel



On all light-alloy wheels, use wheel bolt B6 647 0132 and the corresponding rim lock B6 647 0142 (from spring 2008: B6 647 0155).

Light-alloy wheels are supplied without tyres, wheel bolts or hub caps.



#### Rudmatic-Disc snow chain system

User-friendly design, can be fitted and removed quickly. A tough plastic ring protects your light-alloy wheel from scratches | pictured right |

#### 5-spoke wheel

Finish: titanium silver  
Wheel: 7 J x 16 ET 34 | Tyre: 205/55 R16  
Option for rear axle:\*  
Wheel: 8 J x 16 ET 30 | Tyre: 225/50 R16

*\*Not compatible with snow chains*

*Mercedes-Benz light-alloy wheels*

*Flaring for wide-base tyres*

*Mud flaps*

*Rim locks*

*Snow chains*

*Valve caps*

*Wheel bolts*

# EXTERIOR



**Add-on parts**

Aerodynamic front apron spoiler lips [A] are available to help underline the SLK's sporty, elegant new look. To coordinate with these there are also high-sheen trim parts for the cross fins in the radiator [B] and the bumper [C] plus high-sheen chromed exterior mirror housings and door handle recesses

*Add-on parts*  
*Door handle recesses*  
*Exterior mirror housings*  
*Indicator bulbs*



**High-sheen chromed door handle recesses**  
 Round off your SLK's chrome finish and protect the paintwork from scratches. Available as a 2-piece set

**Chrome-look indicator bulbs**  
 Mirrored indicator bulbs round off the chrome finish of your SLK to perfection | pictured left, standard equipment pictured below |

**High-sheen chromed exterior mirror housings**  
 The high-sheen chromed mirror housings are a particularly distinctive part of the chrome finish concept for the SLK. Expected to be available from 3<sup>rd</sup> quarter of 2008



**EXTERIOR**





*iPod Interface*  
*Media Interface*  
*consumer cables*  
*Audio/navigation*  
*Telephony*

# TELEMATICS

## Sound choices

When you're driving with the top down, the sound of the wind in your ears can be the perfect accompanying music. But if you'd rather listen to a more conventional soundtrack, the Mercedes-Benz telematics systems are the perfect choice.

Have your SLK factory-fitted with the optional extra Media Interface and hook up your music player to the USB, AUX or iPod port. The Interface not only lets you use a variety of players but conveniently allows you to control the playback via your audio system too.



### Media Interface consumer cables

For models with optional extra "Media Interface" (Code 518)

Set of 3 cables, designed to connect various players (one at a time) to the pre-installed Media Interface in the glove compartment. Allows you to select tracks and adjust the playback via your car's audio system. The current status of your player also appears in the central driver's display, helping you to keep your attention focused on the traffic.

Designed to connect iPods<sup>1</sup> [2] and devices with USB<sup>2</sup> [1] or AUX [3]

<sup>1</sup> For details and a list of the supported players, please contact any Mercedes-Benz service outlet or visit the "Accessories" section of our website: [www.mercedes-benz.com](http://www.mercedes-benz.com)

<sup>2</sup> Supports MP3, WMA and AAC. For further details, contact your Mercedes-Benz partner



### iPod®/iPhone® holder<sup>3</sup>

Black plastic holder for the glove compartment. Holds your iPod in place. Soft, flock surface protects the player from scratches and prevents it sliding around. For the iPod Interface Kit



### Mercedes-Benz iPod Interface Kit<sup>3</sup>

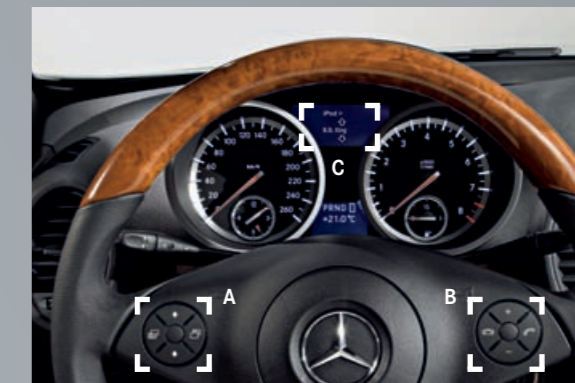
It's easy to control your iPod via the multifunction steering wheel: scroll through the menus [A], adjust the playback and volume [B] and display the artist/title of your choice in the instrument cluster [C].

The soft, flocked surface of the iPod/iPhone holder protects your player from scratches and prevents it from sliding around

<sup>3</sup> The Mercedes-Benz Interface Kit allows you to listen to the music on your iPhone. It does not support the phone function

The iPod Interface Kit and the iPod holder are compatible with the following models: iPod (from 4<sup>th</sup> generation) | iPod video | iPod photo | iPod U2 | iPod mini | iPod nano 1<sup>st</sup> and 2<sup>nd</sup> generation | iPod classic | iPod touch | iPhone

iPod/iPhone holder cannot be used in conjunction with Media Interface consumer cables



Media Interface consumer cables

iPod Interface Kit  
iPod/iPhone holder

# TELEMATICS



**COMAND APS with 6-DVD changer**

The new COMAND APS now offers even more convenience and freedom when you're on the move: your route is navigated with impressive speed, thanks to the integral hard drive. The MUSIC REGISTER has up to 4 GB of memory, offering virtually unlimited space for your favourite music. COMAND APS plays back music from DVDs and CDs and from SD memory cards. The optional Media Interface (see page 18) also allows you to connect your mobile music player. And for convenience and enhanced safety, all of these functions can be controlled via your COMAND system. Other features: Bluetooth® connectivity, 6.5" TFT colour display, dynamic route guidance (RDS/TMC), double-tuner radio with 4-channel amplifier for outstanding sound, DVD changer controls. Also available without DVD changer as an option



**Audio 20 CD with CD changer**

Double-tuner radio with 5" colour display. Bluetooth interface with hands-free function. CD changer is MP3-compatible. Can be operated via the multifunction steering wheel

**Audio 50 APS with 6-DVD changer**

Navigation system and car hi-fi combined in one unit which can be operated via the multifunction steering wheel. Dynamic route guidance via RDS/TMC. Navigation arrows shown on 5" TFT colour display. Bluetooth connectivity with hands-free function as standard, double-tuner radio with 4-channel amplifier for outstanding sound. DVD changer controls. Also available without DVD changer as an option



**Europe navigation DVD for COMAND APS**

The whole of Europe on one DVD

**Europe navigation DVDs for Audio 50 APS**

The whole of Europe on three DVDs

*The data for the Mercedes-Benz navigation systems is regularly updated. Please ask your Mercedes-Benz partner for the latest versions*

*For further information about using the phone while in your car, see our Telematics brochure. Ask your Mercedes-Benz partner for a copy*

**Mobile-phone holders**

When it comes to selecting a mobile for your Mercedes-Benz, you've never had so much choice. One "click" is all it takes to replace the system's intelligent mobile-phone holder. It takes a matter of seconds and is as straightforward a process as inserting the mobile into the holder itself. Changing your mobile and even alternating between different models of mobile no longer presents a problem. There are no compromises when it comes to convenience-enhancing technology either: the telephone can be operated via the multifunction steering wheel, and the telephone status and call information are displayed in the central multifunction display – as you would expect.

To use a mobile-phone holder, your car must be factory-fitted with one of the two following optional extras:

- ▶ Code 386 convenience telephony
- ▶ Code 388 Mercedes-Benz mobile phone (UHI)

Holders are available for many popular Nokia and Sony Ericsson mobile phones



6220  
6230  
6230i  
6233



K800i



*Audio 20 CD  
Audio 50 APS  
COMAND APS  
Europe navigation DVDs  
Mobile-phone holders*

**TELEMATICS**



*Interior appointments  
Child safety*

# INTERIOR

## The view from the inside

In a roadster the boundaries between the interior and exterior are fluid, particularly when it features an intelligent, fully automatic roof.

For those who appreciate comfort, there are plenty of extras to choose from. Including a plexiglass draught-stop that protects the occupants of the SLK from the wind, without depriving them of that glorious sensation of being in direct contact with the outside world.



### Wood/leather steering wheel

The exclusive wood/leather steering wheel, with its 3-spoke design, coordinates perfectly with the interior of your SLK. It not only underlines your car's dynamic elegance but also offers ergonomic comfort with its contoured thumbrests | wood: pale burr walnut | leather: black |



### Mesh draught-stop

The basis of the draught-stop is a fine-mesh net which slows down the airflow and reduces the volume of air. Its sophisticated design makes it simple to fit. The fabric draught-stop behind the seats protects the occupants from draughts.



### Plexiglass draught-stop

Three-piece set for enhanced comfort when driving with the top down. The transparent plexiglass plate and nets stretched on plastic frames for the rollover bars can be precision-fitted to the vehicle in a few simple steps. Supplied with a practical stowage bag

Wood/leather steering wheel  
Draught-stops

INTERIOR



**“DUO plus” child seat**

Optimum safety for children between the ages of around 8 months and 4 years (9 to 18 kg). Fitted as standard with top tether, an additional belt for securing the head section, a height-adjustable shoulder belt and ventilation channels. With automatic child seat recognition and ISOFIX attachment points. Adjustable tilt. Removable, washable “DaimlerSquare” cover | pictured above left |

**“KID” child seat**

Booster seat with height-adjustable backrest. The belt guides at the sides prevent the lap belt from sliding over the child’s abdomen. Available with automatic child seat recognition as an option. For children between the ages of around 3.5 and 12 (approx. 15 to 36 kg). Removable, washable “DaimlerSquare” cover | pictured above right |



**“BABY-SAFE plus” child seat**

Deep, moulded seat design offers extra side-impact protection for optimum safety. Special padding, designed to protect particularly vulnerable body areas of children up to around 15 months (up to 13 kg). Removable, washable “DaimlerSquare” cover

*Mercedes-Benz child seats are available with automatic child seat recognition as an option. If your car also has automatic child seat recognition, the technology automatically deactivates the passenger airbag when a child seat with automatic child seat recognition is installed on the passenger seat.*

*For further information on the Mercedes-Benz child safety range, ask your Mercedes-Benz partner for a copy of our separate brochure*

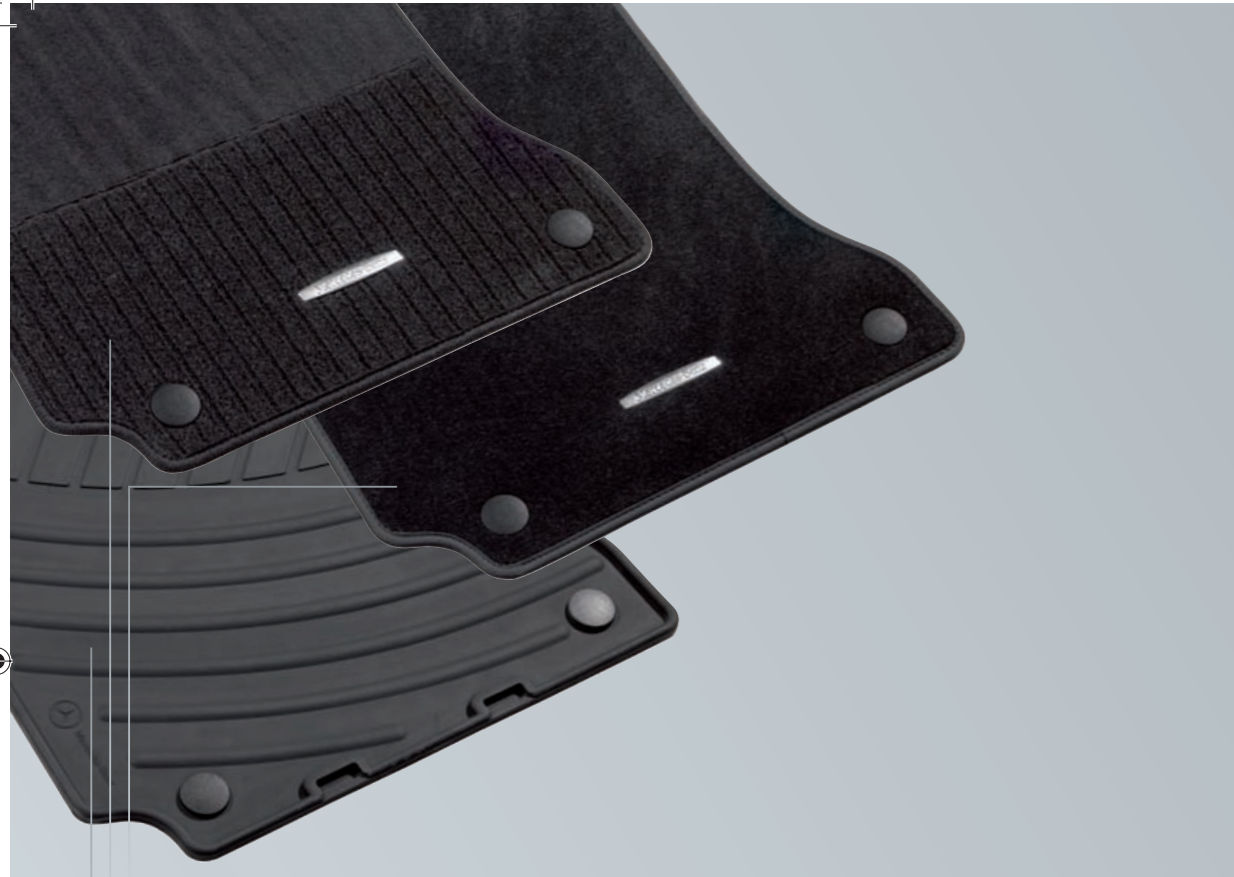


**Seat covers**

Available for driver and passenger seat. In black only

*Child safety  
Seat covers*

**INTERIOR**



**All-season mats, rep mats, velour mats**  
Durable, hardwearing materials. Available in various colours to match the interior. Can be clip-fastened to the floor of the vehicle to prevent slipping



**Edition SLK suit cover**  
Made from high-quality ballistic nylon. Holds up to 3 items of clothing. Designed to hang behind one of the seats, taking up a minimum of space. Large leather flap with magnetic fastening at front, embossed with "SLK"

**Cup holder**  
The cup holder allows you to keep cups and cans within easy reach at all times. Available in black



**Illuminated door sill panels**  
The blue illuminated Mercedes-Benz lettering is activated every time you open the door to get in or out. These illuminated door sill panels, in brushed stainless steel, are a further "highlight" of the SLK



**Spectacles box**  
Universal - adjusts to different sizes of spectacles/sunglasses

*Cup holder  
Door sill panels  
Floor mats  
Spectacles box  
Suit cover*

# INTERIOR



Carrier systems  
Boot accessories

# CARGO & CARE





| 1 |

| 2 |

| 3 |



**Mercedes-Benz roof boxes**  
Elegant, aerodynamic design, made for your Mercedes-Benz. High-quality, extremely durable material. Available in two colours: titanium metallic **A** and matt silver **B**

**1 | Mercedes-Benz roof box XL**  
family box | Capacity: approx. 450 litres. Available with opening on right or left. Optional accessories: luggage set and ski rack insert | pictured on p 33 |

**2 | Mercedes-Benz roof box L**  
sports box | Capacity: approx. 330 litres. Available with opening on right or left. Optional accessories: luggage set and ski rack insert | pictured on p 33 |

**3 | Mercedes-Benz roof box M**  
weekend box | Capacity: approx. 400 litres. Available with opening on right or left



**Alustyle basic carrier bars**  
The Alustyle basic carrier bars, specifically developed for the SLK, are precision-tailored to the vario-roof and are fitted to the A-pillar and the rear. The vehicle must feature the optional extra "pre-installation for carrier systems". The Alustyle basic carrier bars are compatible with a variety of different roof-mounted accessories (e.g. ski and snowboard rack, bicycle rack and roof boxes)

**Optional extra "pre-installation for carrier systems"**  
Required for fitting basic carrier bars (can also be retrofitted). Please contact your Mercedes-Benz retailer



## Carrying the argument

Who said a Roadster isn't the best choice for your holiday travels?

Obviously someone who wasn't familiar with the SLK. We offer the same versatile range of roof-mounted carrier systems for your Roadster as we do for our Saloons. Ideal for anything from bikes and snowboards to roof boxes.

Our precision-fit Mercedes-Benz carrier systems are developed using the vehicle's original CAD data and are subjected to intensive testing.

**Luggage set** | for Mercedes-Benz roof box L |  
Four bags made from hardwearing, water-repellent polyester. Tailored to the dimensions of the roof box L | pictured below left |

**Luggage set** | for Mercedes-Benz roof box XL |  
Four bags, designed to make perfect use of the space available in the roof box XL. Made from hardwearing, water-repellent polyester. Plus two matching ski bags, each designed to hold max. two pairs of skis. Ski bag also available separately | pictured below centre |

**Ski rack insert**  
A secure hold for up to five pairs of skis, subject to ski geometry. For Mercedes-Benz roof box XL | pictured below right |  
A secure hold for up to three pairs of skis, subject to ski geometry. For Mercedes-Benz roof box L | not pictured |



CARGO & CARE



**New Alustyle ski and snowboard rack**

“Comfort” | for up to 6 pairs of skis or 4 snowboards.  
Lockable | pictured below |  
Practical pull-out function makes loading and unloading easier | pictured left |  
“Standard” | for up to 4 pairs of skis or 2 snowboards.  
Lockable | pictured right |



*The convenient design of the Mercedes-Benz bicycle rack allows the cycle to be attached at ground level. The cycle is simply mounted on the rail alongside the vehicle and both are then fitted to the basic carrier bars*



*Ski/snowboard rack  
Bicycle rack  
Coil locks*

**New Alustyle bicycle rack**

Up to three bicycle racks can be fitted per pair of basic carrier bars. Each bicycle rack can hold one bicycle with a max. frame diameter of 98 mm (circular frame tubes) or 110 x 70 mm (oval frame tubes). The support frame folds down when not in use, reducing drag when travelling without cycles. Cycles can either be attached to the rack once it has been fitted to the roof or before it is fitted | pictured above |



**Coil locks**

Designed to help prevent theft. Available as an option for the bicycle rack

**Mercedes-Benz Bikes**

Sporty, elegant bikes in an exclusive Mercedes-Benz design. Ideal for everyday cycling and touring. | not pictured |  
For further details, please see our “Mercedes-Benz Bikes” brochure

**CARGO & CARE**



**A | Coolbox**  
 black/grey | Hard case with fabric cover featuring pockets for extra items. Cold/hot switch. Capacity: 24 litres. 12 V connection. Adjustable carrying strap

**B | Coolbag**  
 black | Fabric outside – plastic liner inside. Outside pockets offer plenty of room for extra items. Capacity: 12 litres. 12 V connection. Adjustable carrying strap

**C | Rectifier**  
 Allows the Mercedes-Benz coolbox and the coolbag to be connected to a 230 V socket at home

**Luggage-securing feature**  
 Ingenious solution to the problem of luggage which slides around in the boot. Attaches securely around the object in question thanks to Velcro fastening

**Shallow boot tub**  
 Simple to clean. Non-slip thanks to Perl-M material. Suitable for transporting foodstuffs

**Luggage nets**  
 Available for the floor or side of the boot, the load sill and the rear bench seat. Prevent lightweight objects from sliding around during your journey. All nets are in bag format



**Ski bag for interior**  
 For up to four pairs of skis. With carrying strap and straps for attaching to load-securing rings in boot



**Non-slip mat**  
 black | Non-slip mat made from oil and acid-resistant polyester. Designed to fit the contours of the boot

**Shopping crate**  
 anthracite | Collapsible



*Boot tub  
 Coolbag  
 Coolbox  
 Luggage nets  
 Luggage securing feature  
 Non-slip mat  
 Rectifier  
 Shopping crate  
 Ski bag*

# CARGO & CARE



#### Leanbag for boot

With its space-saving design, the Leanbag, made from Catania synthetic leather, is precisely tailored to the dimensions of the SLK. The Leanbag has a sturdy spring steel frame. It can be attached in place in the boot using Velcro strips and hooks

#### Edition SLK bag for boot

Elegant bag made from high-quality ballistic nylon, designed to make optimum use of the boot. With practical trolley feature. Large leather panel on front, embossed with "SLK"

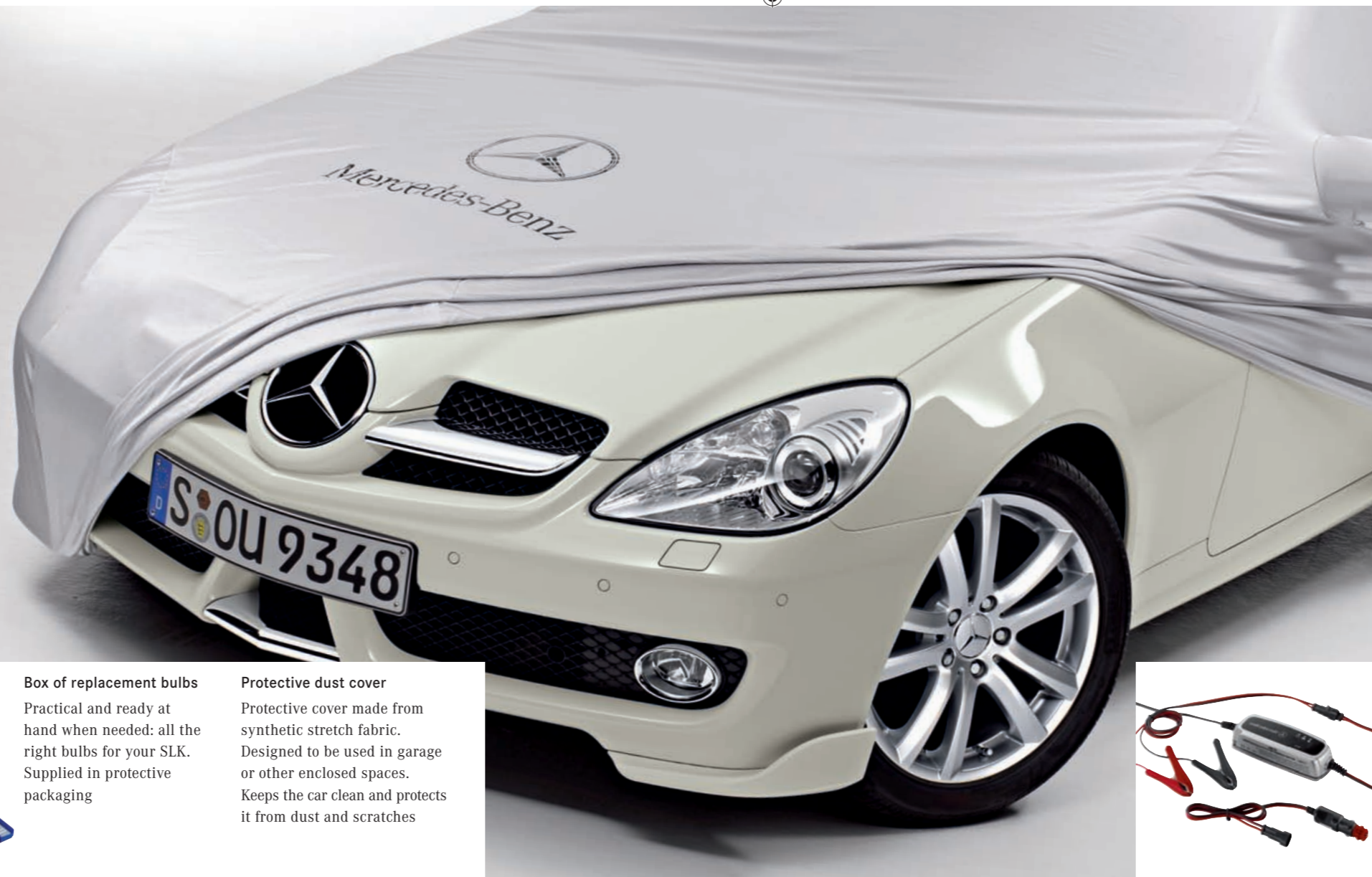


#### Box of replacement bulbs

Practical and ready at hand when needed: all the right bulbs for your SLK. Supplied in protective packaging

#### Protective dust cover

Protective cover made from synthetic stretch fabric. Designed to be used in garage or other enclosed spaces. Keeps the car clean and protects it from dust and scratches



#### Safety tow rod

2-piece steel rod with patented connector and cotter pin. For trailer couplings and towing eyes. Approved for vehicles with a gross vehicle weight of up to 3.2 t

#### Fluorescent jacket

Already compulsory in many countries, the bright orange and yellow fluorescent jackets with reflective stripes are conspicuous even in the dark. Pack of two



#### Charger with trickle charge function

With its cutting-edge technology, the Mercedes-Benz charger ensures the longest possible battery life. Available in a 3.6 amp version (left) and a 25 amp version (not pictured)



- Bags for boot
- Box of replacement bulbs
- Charger units
- Fluorescent jackets
- Protective dust cover
- Tow rod

## CARGO & CARE



*Mercedes-Benz  
Lifestyle Collection*

COLLECTION



#### “SLK” key ring

Shiny. Solid. Bold. Key ring featuring a replica of the SLK symbol from the SLK boot lid. Letters in diecast zinc. Split ring, centre section and articulated link in brass. All parts feature a high-quality rhodium coating and are virtually nickel-free, emphasising the silver colour to full effect. High-sheen polished surface with matt links. Laser-engraved Mercedes-Benz logo



#### Scarf

Fine yarns – blended to create a warming and stylish accessory. Made from wool and cashmere. Grey and black stripes. 180 x 30 cm

## Living the lifestyle

You drive a Mercedes-Benz. But do you live a Mercedes-Benz lifestyle? The Mercedes-Benz Collection offers a whole range of ways to transfer the standards you apply to your car to other areas of your life too.

So when you purchase a cashmere scarf or a Mercedes-Benz watch you're investing in a whole lot more than the product itself.



#### Classic cosmetics bag

A special item for everyday use. This leather cosmetics bag easily accommodates everything you need. One slot pocket on front, two slot pockets inside

#### Wallet

Life has plenty to offer. If you want to enjoy it to the full, having the right wallet can't hurt. Six credit card slots, one note section, one slot pocket and one money clip should cover everything



#### Women's sunglasses

A lot of things in life depend on your point of view. But good taste is something that's undeniable. Undeniably attractive. Take a glance at these sunglasses – or, even better, try them on for yourself – and you'll know what we mean. Delicate metal frame with purple plastic elements. Zeiss lenses with graduated tint. 100% UV protection. With case



#### Unisex aviator's watch

Transcends all time zones with its sublime design. Stainless steel and leather combined to stylish and confident effect. Distinctive rotating bezel, glow-in-the-dark hands, screw back. Tested to 5 ATM. Mercedes-Benz logo engraved on back

Cosmetics bag  
Key ring  
Scarf  
Wallet  
Watch  
Women's sunglasses

COLLECTION



*Light-alloy wheels  
Bodystyling*

AMG



#### AMG bodystyling

AMG bodystyling comprises a front apron with round, clear-lens, chrome-ringed fog lamps, a rear apron, side skirts and a rear spoiler lip (painted in body colour) | also pictured on pages 44/45 |



**18" AMG multi-spoke wheel | Style V**  
 AMG light-alloy wheel | Finish: titanium grey, high-sheen  
 Wheel: 7.5 J x 18 ET 37 | Tyre: 225/40 R18  
 Option for rear axle:  
 Wheel: 8.5 J x 18 ET 30 | Tyre: 245/35 R18



**18" AMG 5-twin-spoke wheel, multi-piece, Style IV**  
 AMG light-alloy wheel | Finish: sterling silver  
 Wheel: 7.5 J x 18 ET 37 | Tyre: 225/40 R18  
 Option for rear axle:  
 Wheel: 8.5 J x 18 ET 30 | Tyre: 245/35 R18



**18" AMG 5-spoke wheel | Style IV**  
 AMG light-alloy wheel | Finish: titanium silver  
 Wheel: 7.5 J x 18 ET 37 | Tyre: 225/40 R18  
 Option for rear axle:  
 Wheel: 8.5 J x 18 ET 30 | Tyre: 245/35 R18



**18" AMG 5-twin-spoke wheel | Style IV**  
 AMG light-alloy wheel  
 Finish: silver, high-sheen  
 Wheel: 7.5 J x 18 ET 37 | Tyre: 225/40 R18  
 Option for rear axle:  
 Wheel: 8.5 J x 18 ET 30 | Tyre: 245/35 R18  
 | also available as 17" wheel | pictured on p 45 |

*Further information on AMG accessories can be found in the current AMG accessories brochure*

**AMG floor mats**  
 Embroidered with AMG lettering  
 | not pictured |

**AMG door sill panels, blue illumination**  
 Available in brushed stainless steel



*Bodystyling  
 Door sill panels  
 Floor mats  
 Light-alloy wheels*

**AMG**